

Notice of Products

Model Number

A□P - S□□ L□□ V□□ - △△/○○

A : Induction motors

□P : Number of poles

S□□ : Outer diameter of the stator [mm]

L□□ : Laminated length [mm]

V□□ : Rated speed [krpm]

△△ : Cu or Al (materials of rotor's conductors)

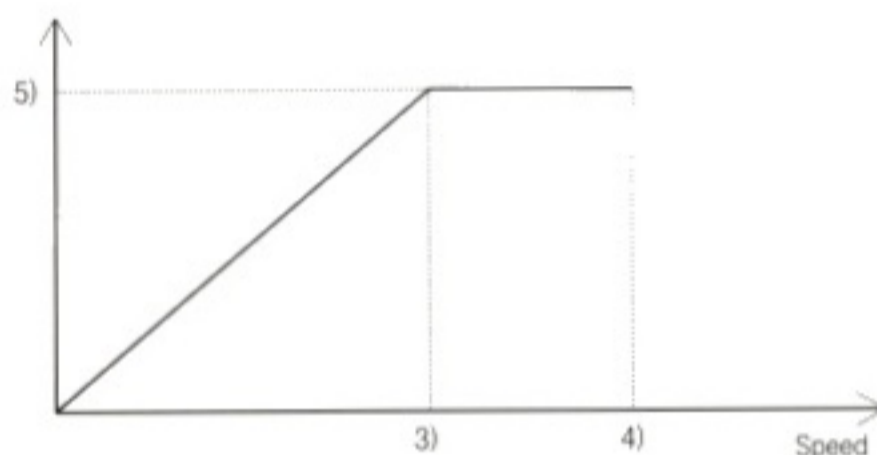
○○ : LD(Insulation varnish) or HD(Resin Impregnation)



Example

Let's suppose that you have chosen A4P-S60L60V30-Cu/LD

- 1) Dia. of the stator : 60 mm
- 2) Laminated length : 60 mm
- 3) Rated speed : 30 krpm
- 4) Maximum speed : 45 krpm (= Rated speed x 1.5)
- 5) Rated power : 2.63 kW (from S60 table)
- 6) Material of rotor conductors : Copper
- 7) Coils of the stator : Dipped into the insulation varnish



Notes of Dimensions

	A2P				A4P								A8P									
	S40		S48		S58		S60		S83		S90		S106		S260		S160		S180			
① Outer dia. of the stator	40		48		58		60		83		90		106		260		160		180			
② Inner dia. of the stator	22		28		38		35		50		60		65		160		110		130			
③ Laminated length of the stator	20-80		20-60		40-80		20-80		20-120		60-150		40-150		120-240		80-270		100-380			
④ Height of the end-winding	Front / Rear																					
	Ld	6.5	8.5	10	12	10	12	13	14	18	22	17	14	23	25	25	30	30	40	30	40	
	Hd	8	10	12	14	12	14	15	16	20	25	20	16	25	28	30	35	-	-	-	-	
⑤ Outer dia. of the rotor	21.6		27.6		37.6		34.6		49.5		59.4		64.4		159		109.2		129			
⑥ Inner dia. of the rotor /max.	Cu		10/13		17.6/18		20/28		10/25		24/33		30/41		40/42		70/80		70/80		80/90	
	Al		10/13		17.6/18		20/23		10/20		24/26		30/33		36/37		70/80		70/80		80/90	
⑦ Width of the end-ring	3		3		4		4		4		5		5		10		5		5			
⑧ Height of the end-ring	4		4		5		7		7		7		10		20		16		20			
⑨ Outer dia. of the end-ring	21.6		27.6		37.6		34.6		49.5		59.4		64.4		159		109.2		129			

